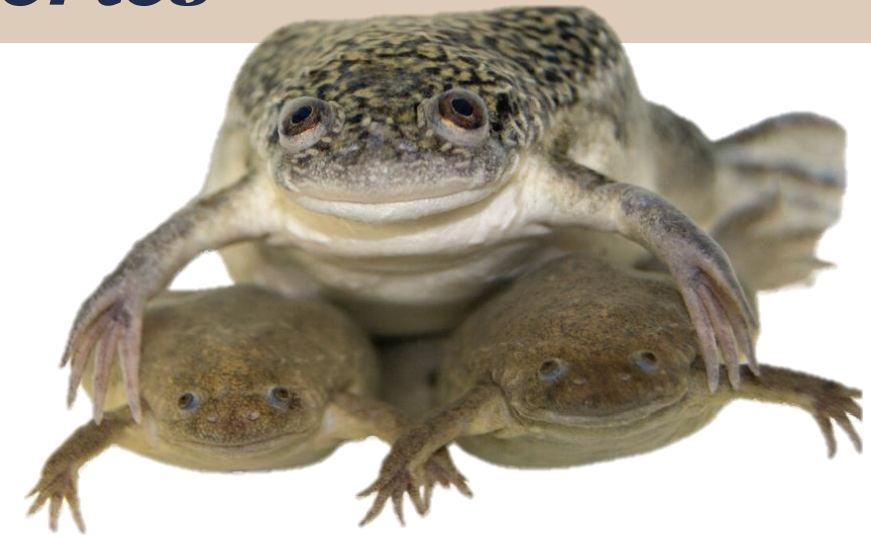


## *Konigsberg Lecture Series*



### **Rebecca Heald, PhD**

Department Co-Chair and Flora Lamson Hewlett Chair and  
Professor of Cell Biology, Development and Physiology  
University of California, Berkeley



## *Mechanisms and consequences of size scaling in frogs*

**Friday, April 25, 2025 • 12:00 - 1:00 pm • 390 Gilmer Hall**

Seminar host: Melanie Worley, PhD  
This seminar is open to the public

